

This quick start guide will guide you how to install and configure TeleEye HD Digital Video Recorder GX684/GX689/GX6816

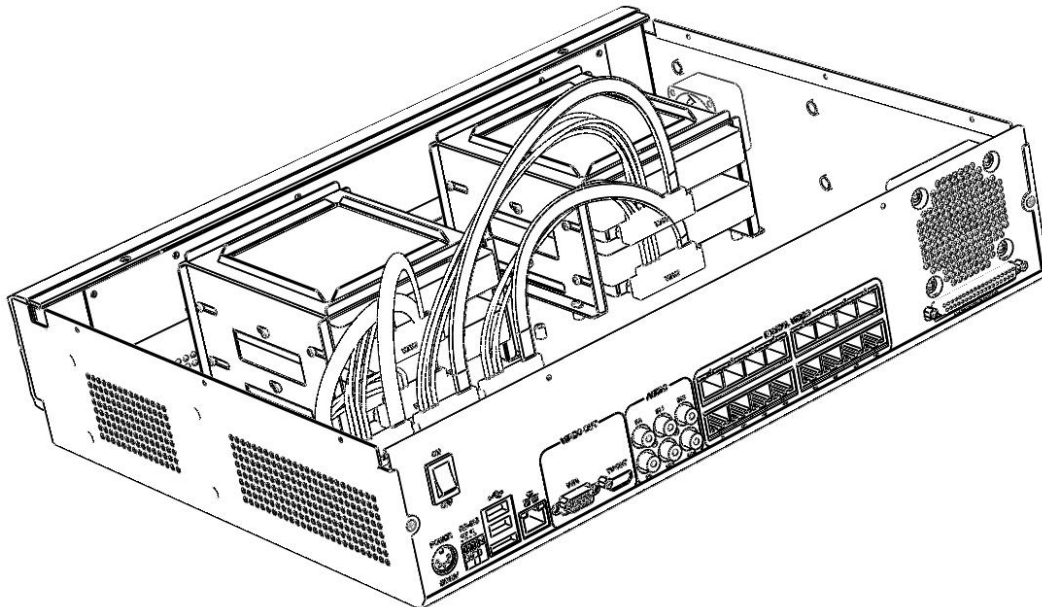
### 1. Hard Disk Installation

Step 1: Loosen the screws that hold the cover.

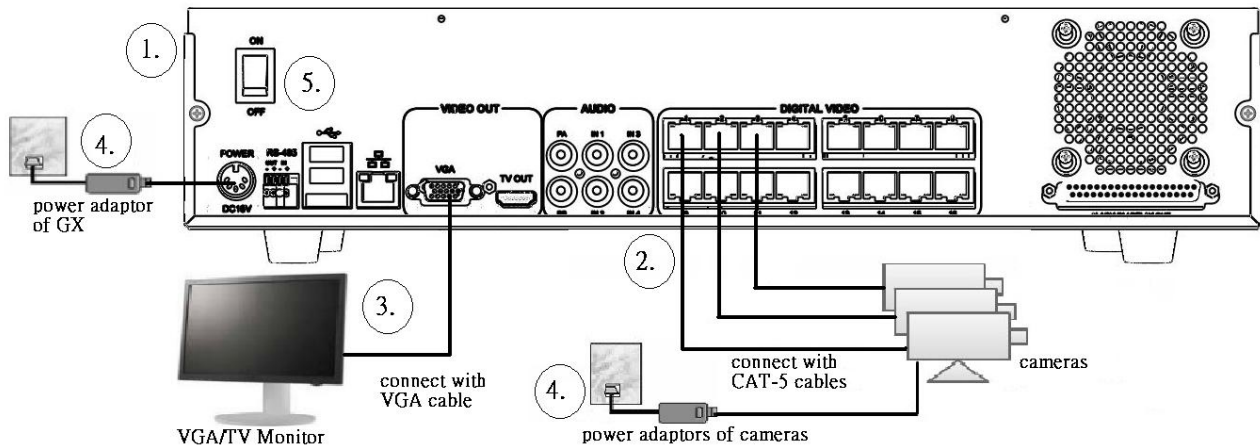
Step 2: Pull off the cover. Loosen the screws of the hard disk holder.

Step 3: Insert HDD into one of the available holders. Mount the HDD to the holder with attached screws. Remount the hard disk holder to TeleEye GX.

Step 4: Connect the SATA cable to the HDD.



## 2. Setup for Local and Remote Monitoring

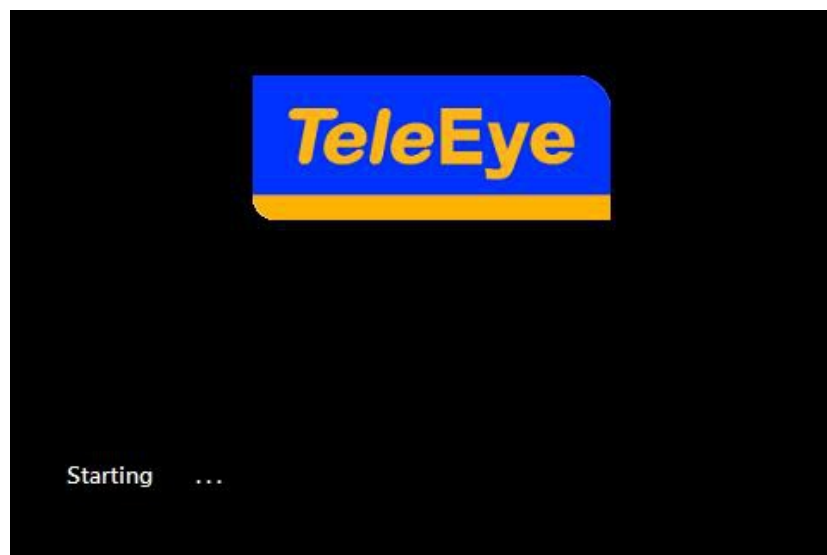


Step 1: Install a hard disk to the TeleEye GX.

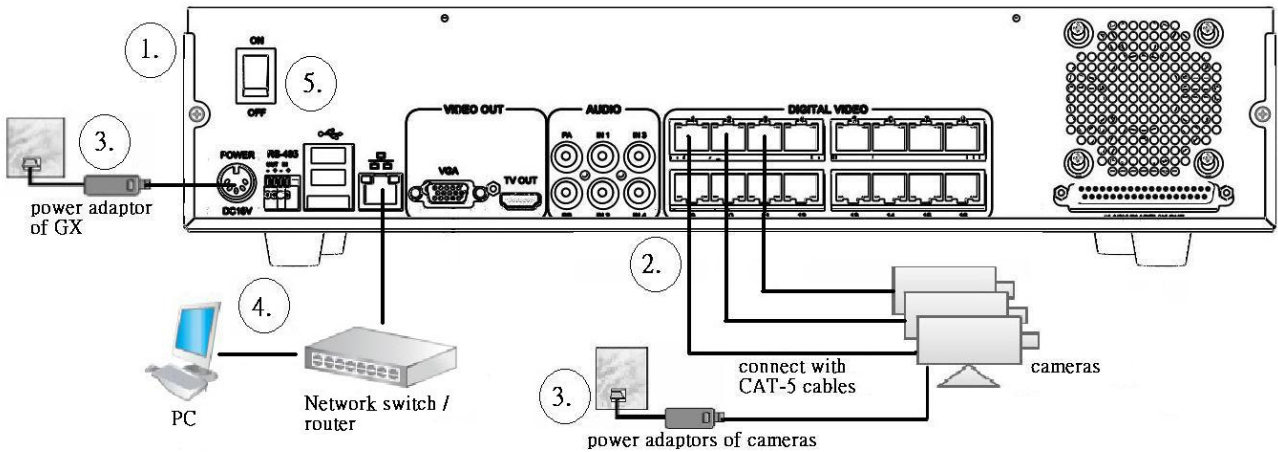
Step 2: Connect cameras to the video ports of TeleEye GX.

Step 3: Connect a monitor to the VGA output of TeleEye GX.

Step 4: Switch on the power of TeleEye GX. A startup screen will appear on the connected monitor.



### 3. Setup for LAN Connection



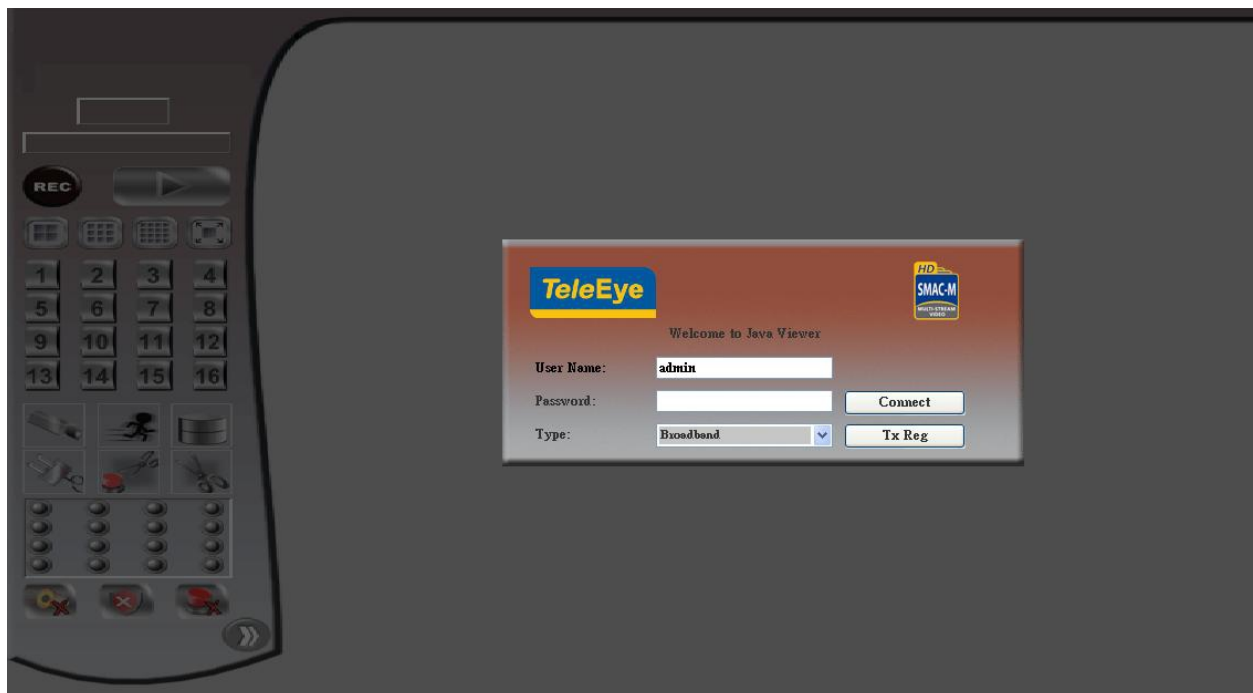
Step 1: Connect TeleEye GX to the network switch.

Step 2: Install TeleEye IP Setup Utility in PC.

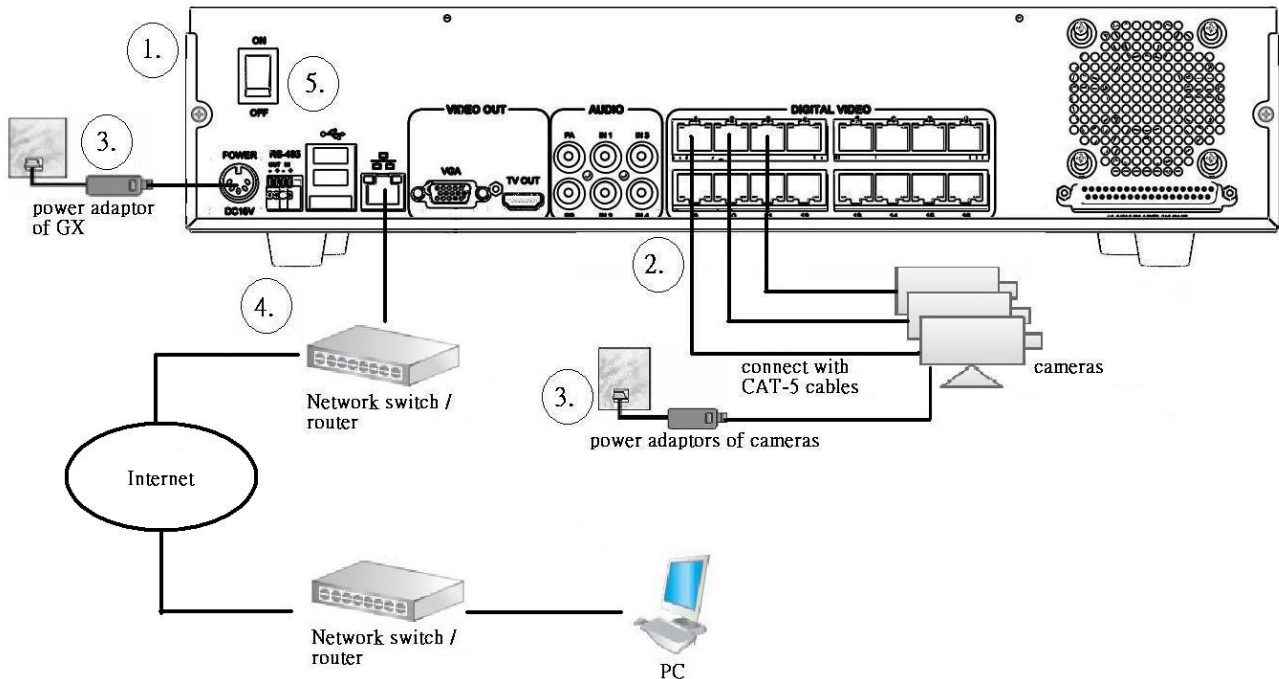
Step 3: Find the TeleEye GX according to the serial number provided.

Step 4: Double click the row representing the digital video recorder.

Step 5: A web browser should be opened automatically. Enter the user name and password.



## 4. Setup for Broadband Internet Connection



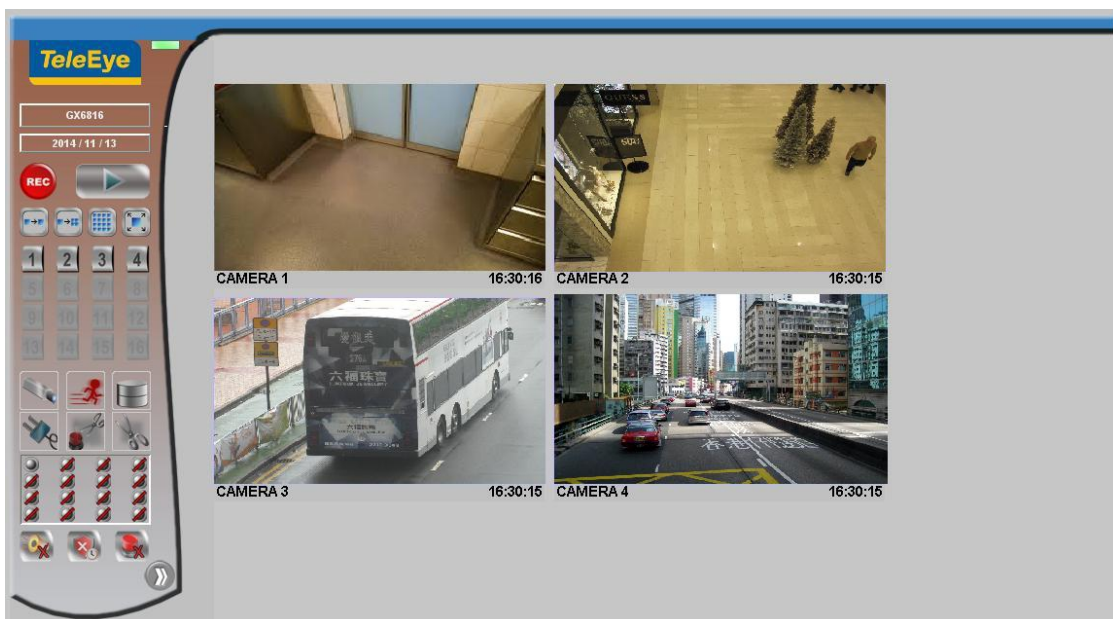
Step 1: Configure the network settings of TeleEye GX through PC with LAN connection.

Step 2: Run IP Setup Utility. Find the TeleEye GX according to the serial number provided by the provider.

Step 3: Reconnect the digital video recorder to the Internet network.

Step 4: Open a web browser and type the IP address or *sureLINK* address in a web browser.

Step 5: Enter the user name and password.



## 5. Default user name and password

The default administrator password is “0”+“digits of serial number”. Here is an example:

**Serial Number** :GXS11529

**User Name** : admin

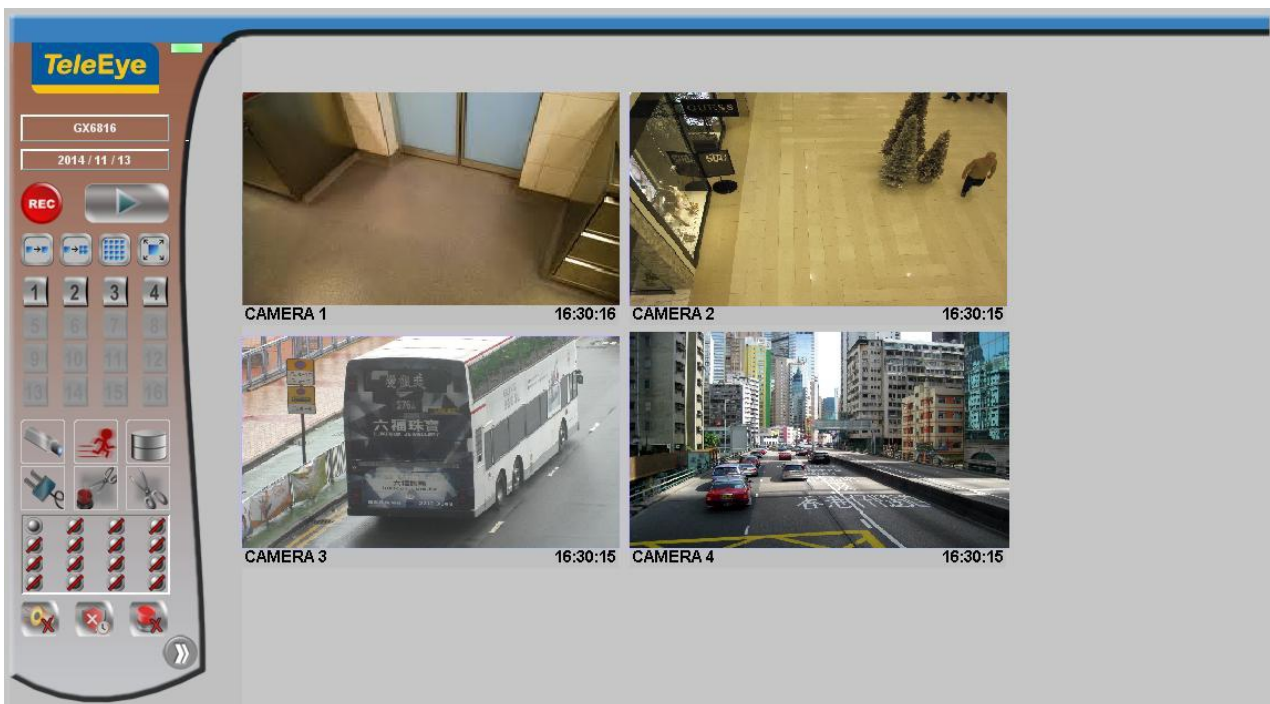
**Default Password** : 011529

## 6. View Live video in Web

Step 1: Enter the IP address of TeleEye GX or sureLink address in a web browser.

Step 2: Enter user name and password.

Step 3: Use screen mode selection panel and camera selection panel to view video.



*For detail operation, please refer to the TeleEye GX user guide.*