

***TeleEye* *///*<sup>+</sup>**

---

***Cyber TeleEye* Web Video Solution  
Video Server  
(CY-S450)**

**User Guide**



**Notice:**

**Signal Communications Limited** reserves the right to make improvements to the product described in this manual at any time and without notice.

This manual is copyrighted. All rights are reserved. This manual may not be copied, reproduced or translated in whole or part without prior consent from **Signal Communications Limited**.

**TeleEye** is a trademark of **Signal Communications Limited** and is registered in China, Hong Kong, US and other countries.

All other trademarks are the property of their respective owners.

Copyright © 2002 **Signal Communications Limited (A member of TeleEye Group)**. All rights reserved.

Version 1.0

**Limits of Liability and Disclaimer of Warranty**

**Signal Communications Limited** have taken care in preparation of this manual, but made no expressed or implied warranty of any kind and assumed no responsibility for errors or omissions. No liability is assumed for incidental or consequential damages in connection with or arising out of the use of the information or accessories contained herein.

Features and specifications are subject to change without prior notice.

# Table of Contents

## **SECTION1**

<b>INTRODUCTION</b>	<b>1</b>
• About the Cyber TeleEye Web Video Solution – Video Server	1

## **SECTION2**

<b>INSTALLATION</b>	
• What You Have	2
• System Requirement	2
• Software Installation	2

## **SECTION3**

<b>START SERVER</b>	<b>4</b>
• Before you start	4
• Connecting to the Video Server	4
• Auto Redial	6
• Stopping the Server	8
• Exit the Server	8

## **SECTION4**

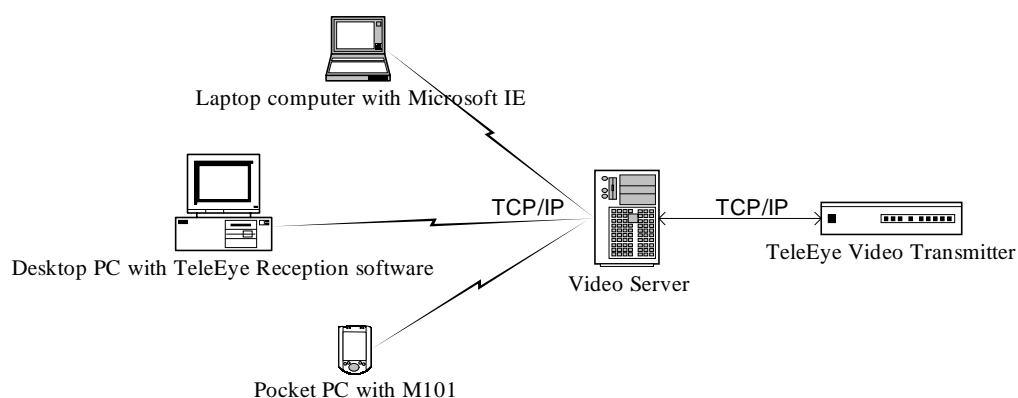
<b>SERVER ADMINISTRATION</b>	<b>9</b>
• Server Status Page	9
• User Status Page	10
• Configuration Page	11
• History Page	12
• About Page	13

## SECTION 1

# INTRODUCTION

**Cyber TeleEye Web Video Solution – Video Server** is specially designed for TCP/IP remote video monitoring system so as to achieve real-time transmission. It serves as an intermediate software between **TeleEye** transmitters and **TeleEye** reception software so as to allow multiple users to monitor their sites simultaneously.

**Cyber TeleEye Web Video Solution – Video Server** uses adaptation technique to automatically manage users with different channel conditions. For user with dialup Internet access, broadband Internet access or LAN, the server will assign an optimized video stream to that particular user. Individual Internet video access will not affect the video speed of others. The **Cyber TeleEye Web Video Solution – Video Server** configuration is illustrated in the following block diagram.



---

---

**SECTION 2**

---

---

---

# INSTALLATION

---

**Cyber TeleEye Web Video Solution – Video Server** runs on Pentium, and compatible PC with Microsoft Windows NT, Windows 2000 or Windows XP environment.

## What You Have

Your **Cyber TeleEye Web Video Solution – Video Server** software package contains:

**Software** : **Video Server** CD-ROM  
**Documentation** : User Guide

## System Requirements

Component	Requirement
Processor	Intel Pentium III 800 MHz or better
Memory	256 megabytes (MB) of random access memory (RAM) or better
Network Interface Card (NIC)	Ethernet card, TCP/IP
Disk space required	20 MB or above
Software	Microsoft Windows NT, 2000 , XP
Hardware	TeleEye Video Transmitter (TeleEye III+, TeleEye III+ VRT)

## Software Installation

**Cyber TeleEye Web Video Solution – Video Server** is an auto-run program. You only have to insert the CD to your CD-ROM, then follow the

### Installation

simple procedures, and you can have your software installed.

Procedures:

1. Insert the software CD-ROM into a CD-ROM drive. The CD-ROM will run setup automatically.
2. Click Install **Cyber TeleEye Web Video Solution – Video Server** to install the software
3. Enter the software serial number which is printed on your CD ROM.
4. Follow the on-screen instruction to install the program.
5. Reboot your computer.

## START SERVER

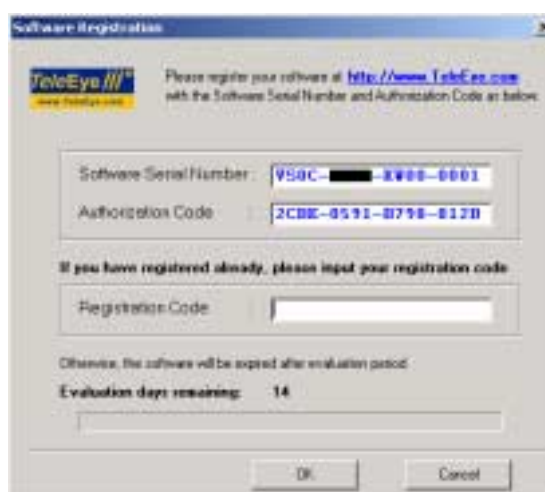
### Before You Start

**Cyber TeleEye Web Video Solution – Video Server** support TCP/IP (Internet or Intranet) connection only. Before start the server, you should:

- Make sure your network card work properly.
- Make sure you have configured the TCP/IP settings.
- Make sure you have connected to the network properly.

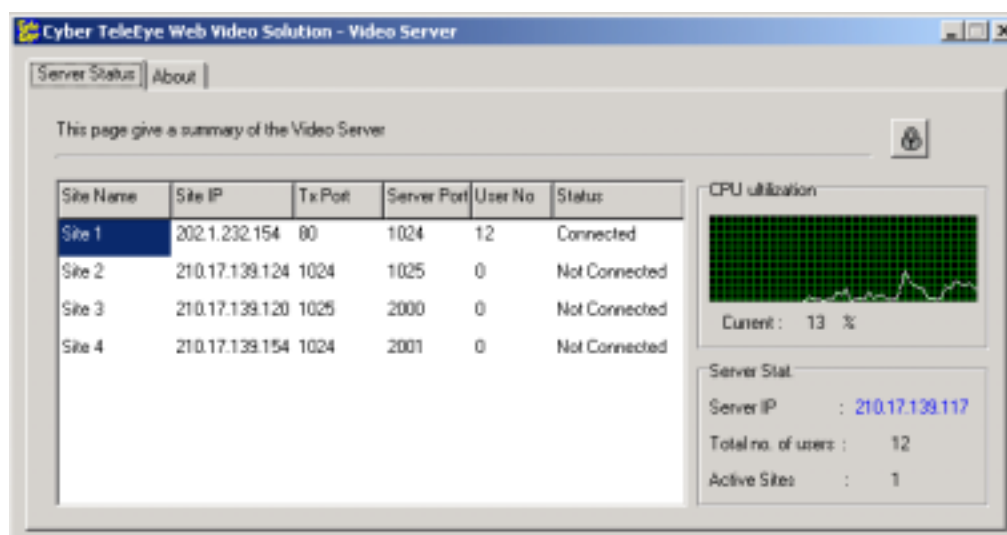
### Starting Video Server

Having installed the **Video Server** successfully, the software will automatically create a shortcut on your desktop. Double click the shortcut, or click [Start]->[Programs]->[ **Cyber TeleEye Web Video Solution**]->[**Video Server**]->**Video Server** to launch the server. If it is your first time running the server, the Software Registration Page will pop up.



### Start Server

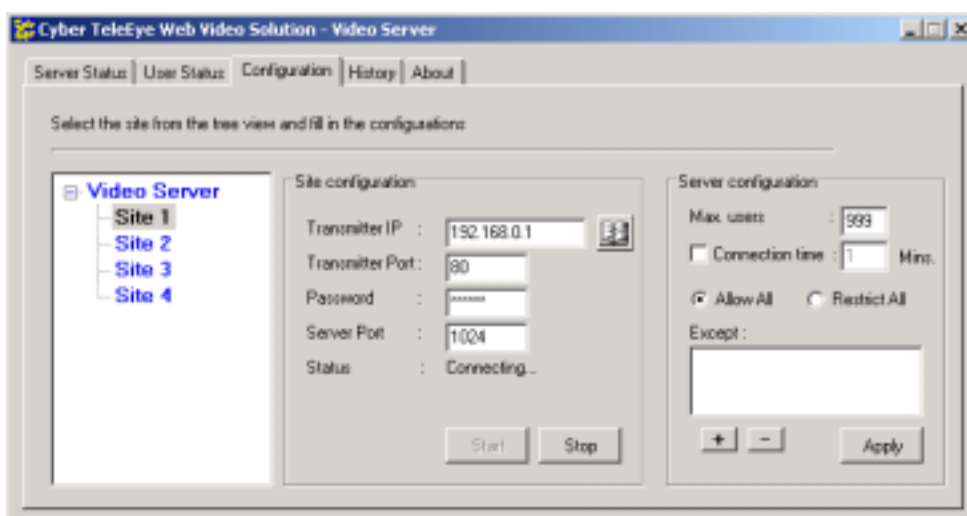
You can go to the web site <http://www.TeleEye.com> to do software registration with the Software Serial Number and Authorization Code provided in this page. After successful registration, you will obtain a Registration Code. Enter this code and press the [OK] button, your software will be registered. Afterwards, the Server Status Page will be shown.



**Note:** If you have already installed and registered one copy of the **Video Server** software, and you want to migrate the software to another computer, you need to do the un-registratio. Having un-install the software, you will obtain an un-registration code. Use this code together with the Software Serial Number and the New Authorization Code to do the registration again for the software installed on the new computer.

During the first time you start up your **Video Server**, the server will show you the default configurations. Otherwise, it will show you the previous configurations. Enter the Administration password to gain access to the server and go to the Configuration page. The default Administration password is "000000".

## Start Server



On the left side of the page, select one of the four sites to configure. Enter the IP address, port number and password of your **TeleEye** transmitter, enter a particular server port number, and click [**Start**]. You server should start successfully with status shown “Connected”.

## Connecting to the Video Server

You can use both **TeleEye** WRS3-AD software or Microsoft Internet Explorer to connect to the **Video Server** to perform live video monitoring. Start you **TeleEye** WRS3-AD software and click connect with IP address and port number of the **Video Server**.

### Start Server



For using Microsoft Internet Explorer, enter the IP address to load the login page and enter the password to view the remote video.



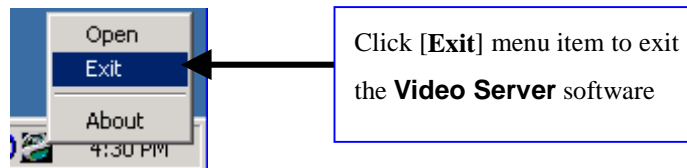
**Start Server**

## Stopping the Server

You may stop the **Video Server** by going to the Configuration page. First select one of the four sites on the left hand side of the page. The specific configurations of this site should be shown on the middle page. Click [**Stop**] button to stop the **Video Server** connecting to this particular site.

## Exit the Server

Clicking the [x] button on the top right of the program will minimize the **Video Server** program only. In order to exit the Server program, you need to right click the **Video Server** icon on your Windows Taskbar, and then click the [**Exit**] menu item to exit the software.



## SERVER ADMINISTRATION

The **Cyber TeleEye Web Video Solution – Video Server** provides the system administrator the ability to monitor the server statistics, advance server configurations, user statistics and user control.

### Server Status Page

The Server Status Page gives a summary of the server statistics. The main information box shown a summary of all site status. On the right hand side of the page, the total CPU usage is plotted. The [Server Stat.] box shows that IP address of the **Video Server**, and the total number of users are connected.

The screenshot shows the 'Server Status' page of the Cyber TeleEye Web Video Solution. The page contains a table of site status, a CPU utilization graph, and a 'Server Stat.' box. Arrows point from descriptive text boxes to these elements.

Site Name	Site IP	Tx Port	Server Port	User No	Status
Site 1	202.1.232.154	80	1024	12	Connected
Site 2	210.17.139.124	1024	1025	0	Not Connected
Site 3	210.17.139.120	1025	2000	0	Not Connected
Site 4	210.17.139.154	1024	2001	0	Not Connected

CPU utilization  
Current : 13 %

Server Stat.  
Server IP : 210.17.139.117  
Total no. of users : 12  
Active Sites : 1

Main information box showing site

CPU usage and history

Server statistics box showing server IP, and total user number

To do the server administration, you need to enter the Administration password as indicated in “Starting Video Server” section. To change the Administration

### Server Administration

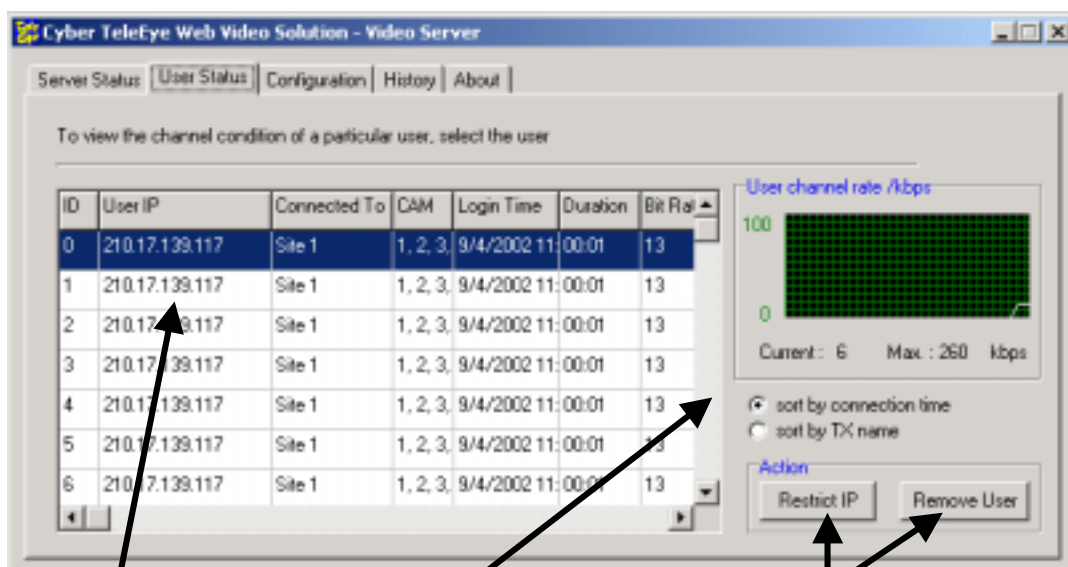
password, click the change password button as indicated in the following diagram.



To lock the **Video Server** to normal mode, click the close button.

## User Status Page

The User Status Page provides a summary of all user information including the user IP address, user selected camera, user login time, user login duration and user channel rate. You can sort the list either by connection time or site name. Besides, the administrator is capable of removing a particular user, or adding user to the restriction list so as to restrict this particular user to login to the **Video Server** in the future.



Summary of user status

Perform sorting on the summary

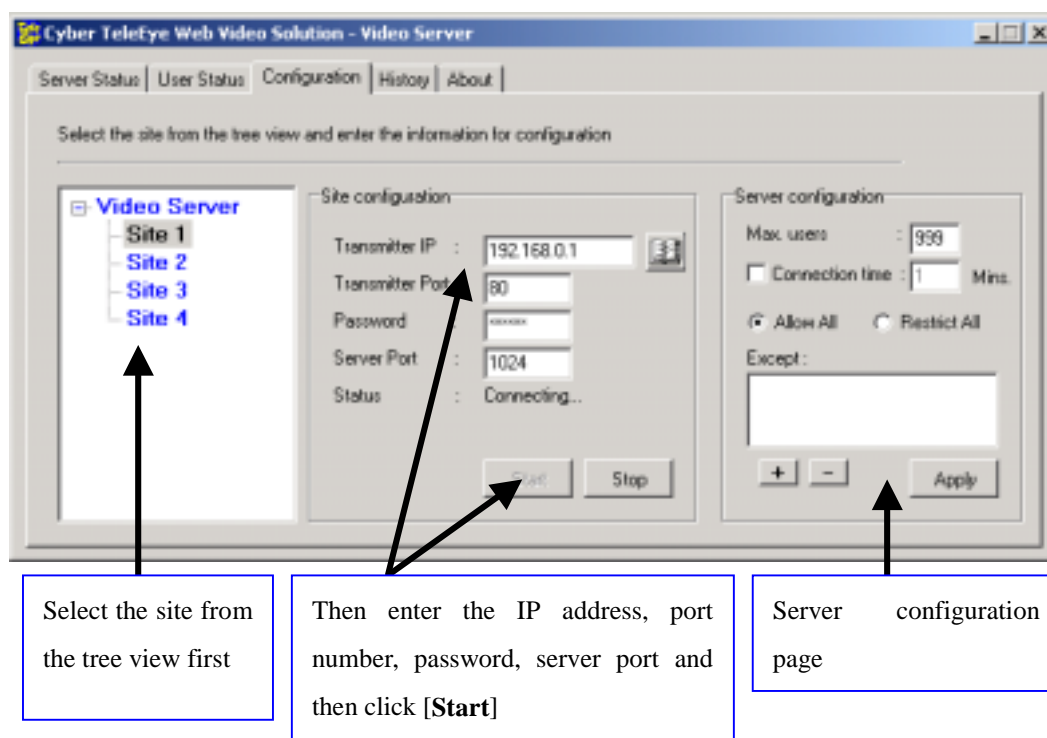
Administrator can manually remove/restrict the selected user

## Server Administration

To remove/restrict a user, administrator should select the particular user on the summary box, and then click the [**Remove User**] button.

## Configuration Page

Basically, the Configuration Page provides site configuration and server configuration functions. You should use this page to setup the IP address, port number, password, and server port for a particular site. For server configuration, you can set the maximum number of users supported, maximum connection duration, and restricted IP address list.



Server configuration

Max. users : 30

Connection time : 0 Min

Allow All  Restrict All

Except :

210.17.139.100 - 210.17.139.201  
210.17.139.50

Apply

Set the max. supported users by the Server

Set the max. connection duration of an user

Select either [Allow All] or [Restrict All] mode, so that all users are allowed to connect, or all users are restricted to connect

Click the [Apply] button to apply all changes

Ranges of IP address that are excepted from the [Allow All] or [Restrict All] mode. Use the [+] and [-] buttons to modify the list

## History Page

The History Page is a user log which record all users connected to the **Video Server**. In this page, you can access the user log database, filtering the logs, and print out the logs.

Cyber TeleEye Web Video Solution - Video Server

Server Status | User Status | Configuration | History | About

User IP	Transmitter IP	Start Date	Start Time	End Date	End Time
210.017.139.074	202.001.232.154	04 Sep 2002	11:25:07	04 Sep 2002	11:25:10
210.017.139.074	202.001.232.154	04 Sep 2002	11:25:07	04 Sep 2002	11:25:10
210.017.139.074	202.001.232.154	04 Sep 2002	11:25:06	04 Sep 2002	11:25:10
210.017.139.074	202.001.232.154	04 Sep 2002	11:25:07	04 Sep 2002	11:25:10
210.017.139.074	202.001.232.154	04 Sep 2002	11:25:06	04 Sep 2002	11:25:10
210.017.139.074	202.001.232.154	04 Sep 2002	11:25:06	04 Sep 2002	11:25:09
210.017.139.074	202.001.232.154	04 Sep 2002	11:25:06	04 Sep 2002	11:25:09

Filter Information

User IP: [ ]

Transmitter IP: [ ]

Start Date: Day: [04] Month: [09] Year: [2002]

Print out the user log

Filter the logs by user IP or transmitter IP

User log records

Filter the logs by date

## Server Administration

## About Page

The About Page shows the version information of the **Video Server**. Besides, you can do [**Software Registration**] on this page.

