



Features

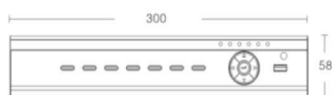
- AHD & IP Hybrid Design
- Max. recording resolution: 1920 x 1080p
- H.264 video compression
- 1 internal SATA HDD
- HDMI/VGA video outputs
- Video extraction through network or using USB flash drive
- Video management software with sureSIGHT
- Supporting sureLINK for dynamic IP Internet connection
- iView HD for remote monitoring on mobile phones

Specifications

MODEL		JN6204	JN6208
VIDEO INPUT	ANALOG CAMERA	AHD (1080p), AHD (720p), PAL, NTSC	
	NO. OF CHANNEL	4	8
	IP CAMERA	TeleEye MP, MQ Series	
	NO. OF CHANNEL	1	4
VIDEO OUTPUT	MAIN	DIGITAL VIDEO	1 channel, 1920 x 1080
		VGA	1 channel, 1920 x 1080
RECORDING	MODE	Manual, schedule, motion, event-driven	
	HD TYPE	SATA X 1	
	MAX. RECORDING RATE PER CHANNEL	1080p: 12 / 15fps 720p: 25 / 30fps	3MP: 6 / 7 fps 1080p: 12 / 15fps 720p: 25 / 30fps
	PLAYBACK	Play, Forward, Backward, Pause, Digital Zoom	
COMMUNICATION	NETWORK	RJ-45, 10/100 base-T ethernet (auto-sensing)	
	CONCURRENT USER	10	
	WEB SERVER	Built-in	
	TELEMETRY CONTROL	RS 485	
	USB	USB2.0 x 2	
AUDIO	INPUT	RCA X 4	
	OUTPUT	RCA X 1	
	IP CAMERA AUDIO INPUT	1	4
EVENT HANDLING	EVENT TYPE	Video motion detection, External alarm, Video loss	
	ACTION TYPE	Local recording, email notification, telemetry preset	
	EXTERNAL ALARM INPUTS	4	
	IP CAMERA ALARM INPUT	1	4
RELAY SWITCH	NO. OF CHANNEL	1	
POWER	VOLTAGE	12V DC	
	MAX. RATING	16W	18W
OPERATING ENVIRONMENT	AMBIENT TEMPERATURE	-10°C - 50°C	
	RELATIVE HUMIDITY	10% - 90%	
MECHANICAL DESIGN	DIMENSION (mm)	300 (W) x 255 (D) x 58 (H)	
	WEIGHT (kg)	1.25	

Dimensions

Unit: mm



www.TeleEye.com

TeleEye Group

Hong Kong Bangladesh China Malaysia Philippines
South Africa Sri Lanka Turkey U.K.

DISTRIBUTED BY:



Features

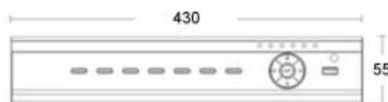
- AHD & IP Hybrid Design
- Max. recording resolution: 1920 x 1080p
- H.264 video compression
- 2 internal SATA HDD
- HDMI/VGA video outputs
- Video extraction through network or using USB flash drive
- Video management software with sureSIGHT
- Supporting sureLINK for dynamic IP Internet connection
- iView HD for remote monitoring on mobile phones

Specifications

MODEL		JN6216
VIDEO INPUT	ANALOG CAMERA	AHD (1080p), AHD (720p), PAL, NTSC
	NO. OF CHANNEL	16
	IP CAMERA	TeleEye MP, MQ Series
	NO. OF CHANNEL	8
VIDEO OUTPUT	MAIN	DIGITAL VIDEO
		VGA
		1 channel, 1920 x 1080
		1 channel, 1920 x 1080
RECORDING	MODE	Manual, schedule, motion, event-driven
	HD TYPE	SATA X 2
	MAX. RECORDING RATE PER CHANNEL	3MP: 3 fps 1080p: 12 / 15fps 720p: 25 / 30fps
	PLAYBACK	Play, forward, backward, pause, digital zoom
COMMUNICATION	NETWORK	RJ-45 10/100 base-T ethernet (auto sensing)
	CONCURRENT USER	10
	WEB SERVER	Built-in
	TELEMETRY CONTROL	RS 485
	USB	USB2.0 x 2
AUDIO	INPUT	RCA X 4
	OUTPUT	RCA X 1
	IP CAMERA AUDIO INPUT	8
EVENT HANDLING	EVENT TYPE	Video motion detection, External alarm, Video loss
	ACTION TYPE	Local recording, email notification, telemetry preset
	EXTERNAL ALARM INPUT	4
	IP CAMERA ALARM INPUT	8
RELAY SWITCH	NO. OF CHANNEL	1
POWER	VOLTAGE	12V DC
	MAX. RATING	32W
OPERATING ENVIRONMENT	AMBIENT TEMPERATURE	-10°C - 50°C
	RELATIVE HUMIDITY	10% - 90%
MECHANICAL DESIGN	DIMENSION	430mm (W) x 300mm (D) x 55mm (H)
	WEIGHT (kg)	2.32

Dimensions

Unit: mm



www.TeleEye.com

TeleEye Group

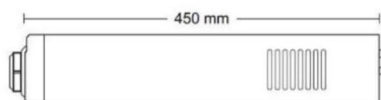
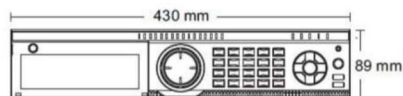
Hong Kong Bangladesh China Malaysia Philippines
South Africa Sri Lanka Turkey U.K.

DISTRIBUTED BY:



Features

- AHD & IP Hybrid Design
- Max. recording resolution: 1920 x 1080p
- H.264 video compression
- 8 internal SATA HDD
- 16 Audio & alarm inputs
- Video extraction through network or using USB flash drive
- Video management software with sureSIGHT
- Supporting sureLINK for dynamic IP Internet connection
- iView HD for remote monitoring on mobile phones



Specifications

MODEL		JN6316	
VIDEO INPUT	ANALOG CAMERA	AHD (1080p), AHD (720p), PAL, NTSC	
	NO. OF CHANNEL	16	
	IP CAMERA	TeleEye MP, MQ Series	
	NO. OF CHANNEL	8	
VIDEO OUTPUT	MAIN	DIGITAL VIDEO	1 channel, 1920 x 1080
		VGA	1 channel, 1920 x 1080
RECORDING	MODE	Manual, schedule, motion, event-driven	
	HD TYPE	SATA X 8	
	MAX. RECORDING RATE PER CHANNEL	3MP: 3 fps 1080p: 12 / 15fps 720p: 25 / 30fps	
	PLAYBACK	Play, forward, backward, pause, digital zoom	
COMMUNICATION	NETWORK	RJ-45 10/100 base-T ethernet (auto sensing)	
	CONCURRENT USER	10	
	WEB SERVER	Built-in	
	TELEMETRY CONTROL	RS 485 x 2	
AUDIO	USB	USB2.0 x 2	
	INPUT	RCA X 16	
	OUTPUT	RCA X 1	
EVENT HANDLING	IP CAMERA AUDIO INPUT	8	
	EVENT TYPE	Video motion detection, External alarm, Video loss	
	ACTION TYPE	Local recording, email notification, telemetry preset	
	EXTERNAL ALARM INPUT	16	
RELAY SWITCH	IP CAMERA ALARM INPUT	8	
	NO. OF CHANNEL	1	
POWER	VOLTAGE	110-240V AC	
	MAX. RATING	95W	
OPERATING ENVIRONMENT	AMBIENT TEMPERATURE	-10°C - 50°C	
	RELATIVE HUMIDITY	10% - 90%	
MECHANICAL DESIGN	DIMENSION	430mm (W) x 450mm (D) x 89mm (H)	
	WEIGHT (kg)	10	

www.TeleEye.com

TeleEye Group

Hong Kong Bangladesh China Malaysia
Philippines South Africa Sri Lanka Turkey U.K.

DISTRIBUTED BY: