

High Definition
Video Surveillance Solution

TeleEye



*Designed with
Higher Level of Security*



Why Choose TeleEye's Network Cameras?

Demands for HD solutions are spiralling upwards in the CCTV market. TeleEye, a pioneer in video surveillance, offers the broadest and a more secure range of high-quality HD network cameras, from MX Series to MP Series, to satisfy various surveillance requirements. The MP Series is able to capture many business opportunities, particularly for installers, as H.264 compression format is a common tender requirement. Meanwhile, all the MX cameras are fully supported by TeleEye GX680 Series of HD Digital Video Recorders and other TeleEye's video management software, giving limitless possibilities for customers.

With TeleEye HD SMAC-M multi-stream video coder, MX Series cameras generate 4 independent video streams for faster transmission and better compression, where data size is reduced about 50% less*. Therefore effectively saves storage capacity and bandwidth.

Thanks to TeleEye Hacker Resistant technology, video data captured by MX cameras are protected. This unique technology is also available for MP cameras when plugged into GX recorders. Scalable video surveillance solution providing full coverage, TeleEye makes the deal!



MX
| HD Network Camera |

MP
| HD Network Camera |

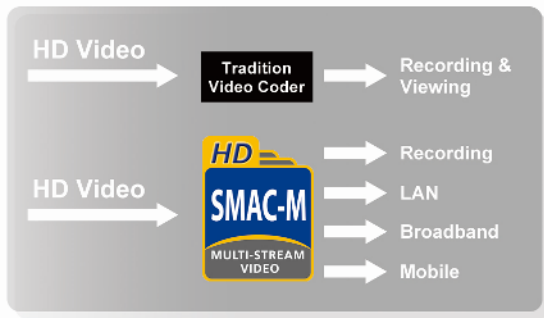
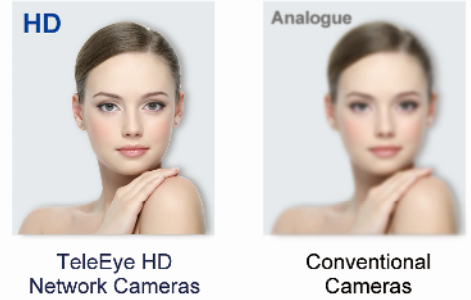
* Data quote from Secutech Camera Excellence Award 2011; Compression rate depends on actual scene under measurement & different results maybe obtained due to motion or scene changes.

High Definition Video Surveillance Solution

Designed with
Higher Level of Security

Superb Video Quality with Exceptional Details

TeleEye MX and MP Series are a versatile range of HD Network Cameras providing professional surveillance solutions. All camera models support H.264 compression, streaming up to 30fps at Full HD 1080p resolution to provide an exceptional image quality for day & night surveillance. With the TeleEye HD SMAC-M multi-stream compression, the MX cameras offer even greater video quality, faster transmission and lower bandwidth utilisation via LAN, broadband and mobile networks.



Faster Transmission & Longer Recording

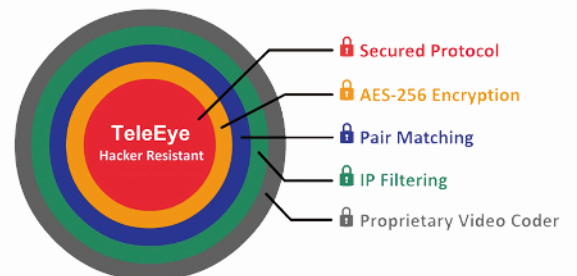
HD SMAC-M is a proprietary HD multi-stream video compression technology, which is developed by TeleEye. The MX cameras incorporate with HD SMAC-M to generate 4 independent video streams simultaneously for optimising video recording and transmission via different network environments. HD SMAC-M compresses video data size up to 50% less* than H.264 at the same picture resolution, quality and frame rate, making it useful for prolonged recording with great details or for applying in low-bandwidth networks.

* Data quote from Secutech Camera Excellence Award 2011; Compression rate depends on actual scene under measurement & different results may be obtained due to motion or scene changes.

Hacker Resistant Technology

H.264 IP cameras are designed based on Open Standards. Hackers are able to bypass the camera and directly access the live video footages remotely. At TeleEye, security is always a top priority throughout the design and production of video surveillance systems. TeleEye always keeps a watchful eye over customers' valuables with five layers of anti hacking protection: AES 256-bit encryption, proprietary HD SMAC-M video coder, specific IP access, secure protocol and pair matching architecture.

This revolutionary technology is engineered and readily available on the MX design. To provide users with more options, MP cameras are able to work with the GX recorders to shield off hackers' attacks and satisfy tender requirements.



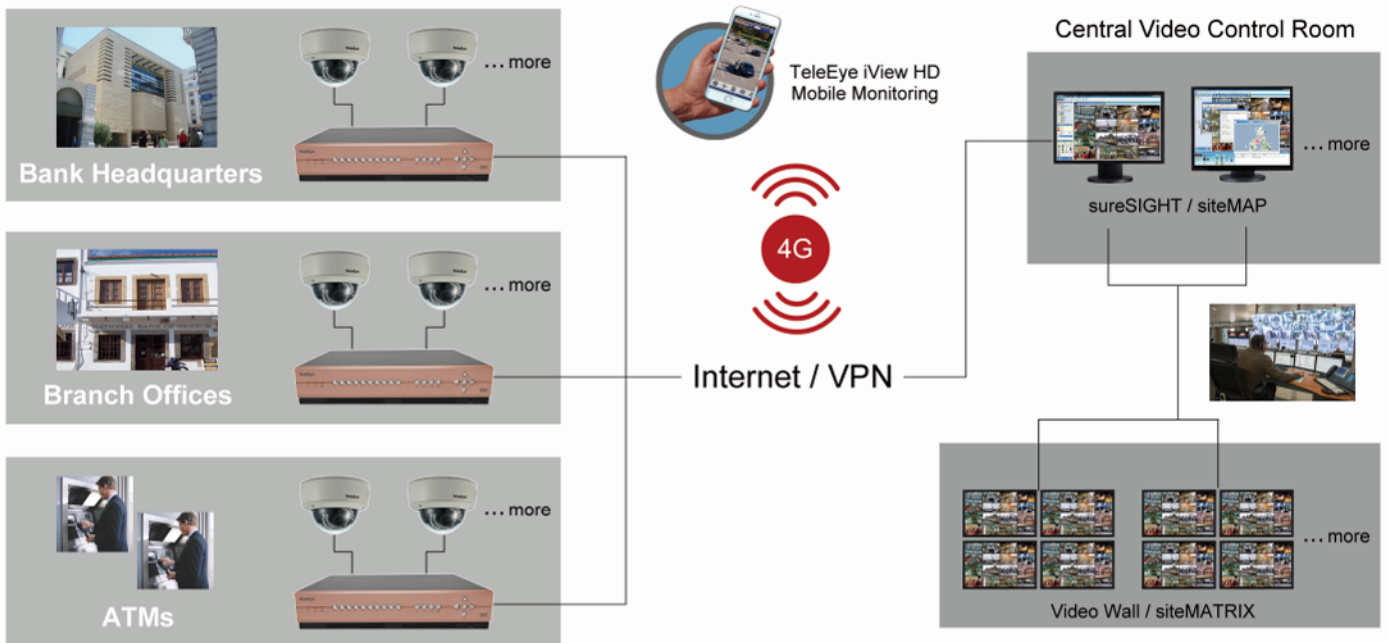
Comprehensive end-to-end, HD Video Surveillance Solution

TeleEye specialises in the development of high-tech CCTV solutions including hardware and video management software, taking care of diverse surveillance needs and requirements. TeleEye MX cameras work seamlessly with TeleEye GX recorders, sureREC HD video recorders and a wide range of TeleEye video management software such as sureSIGHT, to form a complete end-to-end HD video surveillance solution. The TeleEye HD solution guarantees optimised performance, seamless compatibility and a convenient single contact point for technical support.

MP Series offers a versatile design range that meets various specifications and requirements. With the robust designs, the MP cameras are weather proof and can withstand harsh outdoor environments. The true day & night operation with auto IR-cut filter, provides outstanding vision for poorly lit surroundings meaning the quality of the images are kept consistent on a 24/7 basis. Once connected with GX recorder, it can separate the video network from an IP network; therefore the video data is fully protected during internet transmission.



Network Configuration



Flagship HD 1080p Network Cameras

MX100 Series Common Features

- HD 1080p, 25/30fps
- 1/2.8" Sony Exmor CMOS Sensor
- Dual compression: HD SMAC-M & H.264
- 4 video streams with independent recording stream
- Excellent video streaming performance
- Hacker Resistant
- Excellent low light performance
- Auto WDR function
- ONVIF mode
- Power over Ethernet - IEEE 802.3af
- Public access mode



MX110E-HD

Compact Fixed Dome

- f=4.2mm fixed iris lens
- 0.1 Lux @ F1.0
- Micro SD card slot (SD/SDHC/SDXC)



MX121E-HD

IR Fixed Dome

- f=4.2mm fixed lens (6mm lens optional)
- ~10m illumination range
- IP66 weather proof & vandal resistant
- Bi-directional audio support, relay switch
- Micro SD card slot (SD/SDHC/SDXC)



MX125E-HD

IR Vari-Focal Dome

- f=2.8-10mm Vari-Focal Auto-Iris IR lens
- ~20m illumination range
- True day & night operation with auto IR-cut filter
- IP66 weather proof & vandal resistant
- Bi-directional audio support, relay switch
- Micro SD card slot (SD/SDHC/SDXC)



MX151E-HD

IR Fixed Bullet Camera

- f=4.2mm fixed iris lens (6mm lens optional)
- ~15m illumination range
- True day & night operation with auto IR-cut filter
- IP66 weather proof



MX163E-HD

Day / Night Box Camera

- CS Mount, Auto-Iris
- 0.1 Lux @ F1.0
- True day & night operation with auto IR-cut filter
- Bi-directional audio support, relay switch
- Sens-up function: 0.005 Lux @ F1.0



MX175EHD

Outdoor IR Vari-Focal Camera

- f=4.2-10mm Vari-Focal Auto-Iris IR lens
- ~20m illumination range
- True day & night operation with auto IR-cut filter
- IP66 weather proof



HD Speed Dome

MX677-HD

Network Speed Dome

- Sony HD camera module, 25fps
- Optical zoom: 20x, Digital zoom: 15x
- Day / night, minimum illumination: 0.1 Lux
- IP66 weather proof
- Presets, Tour, Auto scan
- Privacy masking



H.264 HD 1080p Network Cameras

MP Series Common Features

- H.264 video compression
- Full HD 1080p
- 0.0 Lux with IR illumination
- True Day & Night operation with auto IR cut-filter.
- IP66 weather proof
- Built-in web server



MP221E-HD

IR Fixed Dome

- 1/2.8" CMOS Sensor, 30fps
- f=3.6mm fixed iris lens
- 2 Independent streams
- ~15m IR illumination range
- Power over Ethernet, PoE



MP225E-HD

IR Vari-Focal Dome

- 1/2.8" CMOS Sensor, 30fps
- f=2.8-12mm Vari-Focal lens
- 2 Independent streams
- ~20m IR illumination range
- Power over Ethernet, PoE



MP251E-HD

IR Fixed Camera

- 1/2.8" CMOS Sensor, 30fps
- f=3.6mm fixed iris lens
- 2 Independent streams
- ~15m IR illumination range
- Power over Ethernet, PoE



MP275E-HD

IR Vari-Focal Camera

- 1/2.8" CMOS Sensor, 30fps
- f=2.8-12mm Vari-Focal lens
- 2 Independent streams
- ~20m IR illumination range
- Power over Ethernet, PoE



MP276E-HD

Long Range IR Vari-Focal Camera

- 1/2.8" CMOS Sensor, 30fps
- f=9-22mm Vari-Focal lens
- 2 Independent streams
- 40-50m IR illumination range
- Power over Ethernet, PoE



HD Speed Dome

MP687-HD

IR Speed Dome

- 1/3" Progressive CMOS sensor, 30fps
- Optical zoom: 20x
- ~100m IR illumination range
- Presets, Patrols, Patterns
- Day / night mode



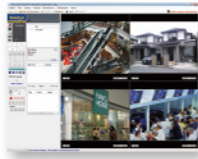
Extensive HD Video Management Software

TeleEye video applications seamlessly unify the full range of CCTVs, IP cameras and digital video recorders into a compatible configuration that is compatible to both proprietary and open standards. Users can scale up or down each solution, in order to customise it to fit their specific requirements and needs.



sureSIGHT - Video Management Solution

An integrated video management platform for IP cameras and DVRs. It is suitable for large scale operations and multi site managements, as it is capable of managing and monitoring hundreds of cameras simultaneously.



sureGUARD - Video Response Centre Solution

A proficient video alarm management solution for Remote Video Response Centres (RVRCs). It fully complies with the British Standard BS 8418 compliance for remote monitoring of detector activated CCTV systems.



iView HD - Mobile Monitoring Solution

TeleEye iView HD Mobile Video Monitoring Solution, provides users with the ability to remotely monitor live videos through an iPad, iPhone, Android tablets, Android smart phones and other various mobile devices.

Value Added Modules for sureSIGHT & sureGUARD:

siteMAP

- Interactive multi-layer hierarchy
- Manage sites, positions cameras and verify alarms
- Indicate current event status

siteMATRIX

- (Only for sureSIGHT Pro & sureGUARD)
- Perform digital video matrix function
 - Designed for video wall applications
 - Scale up to 80 cameras

siteCHECK

- Allow operators to ensure that every single site is connected properly

Industry Recognition

With various unique and cutting edge technologies such as Hacker Resistant Technology, HD SMAC-M video coding technology, TeleEye MX camera has been selected as a finalist in the Secutech Camera Excellence Award. All entries had to meet rigorous standards including unique features and technology. The TeleEye MX camera met the stringent criteria with great recognition from the judging panel.



TeleEye Group

Signal Communications Ltd.

Int'l: (852) 2995 5996
HK: (852) 2995 5992
Email: info@TeleEye.com
Web: www.TeleEye.com

TeleEye Europe Ltd.
Tel: (44) 1628 776061
Email: info@TeleEye.co.uk

TeleEye Mauritius Ltd.
Tel: (230) 686 1010
Email: info@TeleEye.com.mu

TeleAy Video Çözümleri A.S.
Tel: (90) 212 343 35 72
Email: info@TeleEye.com

TeleEye Bangladesh Ltd.
Tel: (88) 02 8627624
Email: info@TeleEye-bd.com

TeleEye Lanka (Pvt) Ltd.
Tel: (94) 11 2695652 4
Email: info@TeleEye.com.lk

TeleEye Philippines Inc.
Tel: (63) 2-3650897
Email: contact@TeleEye.com.ph

TeleEye Digital Technology (Shenzhen) Co., Ltd.
Tel: (86) 755-2671-2122
Email: info@TeleEye.com.cn

TeleEye Malaysia Sdn. Bhd.
Tel: (603) 5122 1398
Email: sales@TeleEye.com.my

TeleEye (South Africa) (Pty) Ltd.
Tel: (27) 11 557 9200
Email: info@TeleEye.co.za